

**BCM**

**GRC Limited**

# BCM GRC Ltd

- Manufacturing GRC since the late 1970's
- Early members of the GRCA
- Founding members of the GRCA QA scheme ( formerly known as the Approved Manufacturers Scheme) now known as GRCA Full Membership
- Dedicated GRC manufacturing facility in Whitchurch, Shropshire
- Manufacture and design a range of GRC products and bespoke architectural projects
- 1<sup>st</sup> architectural project was Huddersfield technical college in 1982



# BCM GRC Ltd – Factory Facilities

- Sales and in house detailing (3<sup>rd</sup> Party engineers used)
- Mould making
- Production - Manufacture to the GRCA specification for the manufacture, curing and testing of GRC products—Grades 18, 18P and 10P GRC
- Capacity up to 75 tonnes per week
- Architectural output typically 5 tonne per day – (65m<sup>2</sup> + per day)
- Grit Blast & Finishing
- Material testing & QA

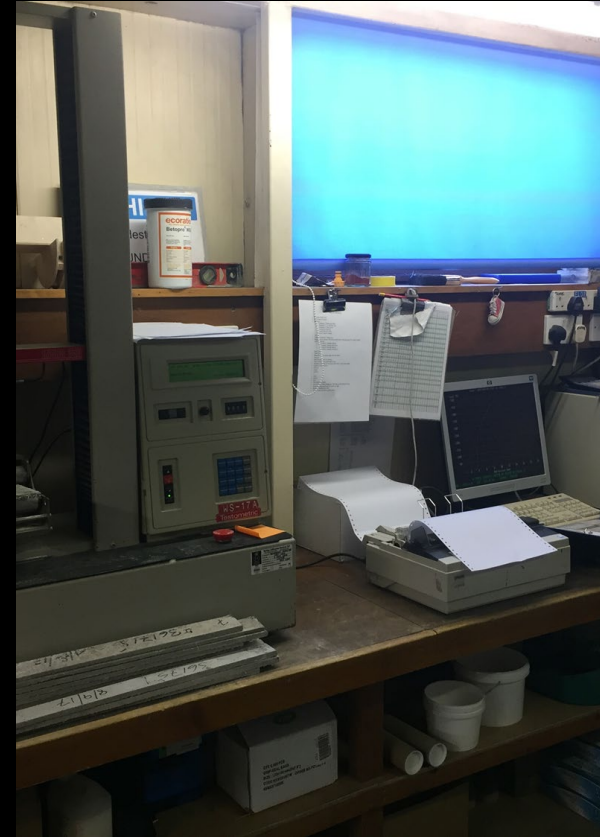


# BCM GRC Ltd – Testing

- Daily in house tests for each spray station in use
- GRCA Methods of Testing Parts 1 – 5
- Project specific testing as required
- Independently audited QA system
- GRCA Full Member



GRCA  
INTERNATIONAL  
FULL MEMBER



# BCM GRC Ltd – Victoria Gate, Leeds



# BCM GRC Ltd – Victoria Gate

- Concept was for a High End retail development based around a complex precast concrete clad John Lewis store
- All materials were selected for their appearance, quality and ability to be manufactured in the complex shapes required
- Design intent and cladding zones around doors required complex moulds and panels



# BCM GRC Ltd – Victoria Gate

[Main Entrance GA's](#)

[Main Entrance Bracket Detailing](#)

[3D Detailing- Unit Coordination](#)

[Typical Panel Detail 1](#)

[Typical Panel Detail 2](#)

[Typical Panel Detail 3](#)



# BCM GRC Ltd – Victoria Gate, Leeds





# BCM GRC Ltd – Victoria Gate, Leeds



# BCM GRC Ltd – Victoria Gate, Leeds



# BCM GRC Ltd – Victoria Gate, Leeds



# BCM GRC Ltd – Victoria Gate

- 2016 – Leeds
- Client: Hammerson Developments
- Architect: ACME
- Main Contractor: Sir Robert McAlpine
- 1000m2
- 360 Panels
- 26 Weeks Production
- Awarded “Best Shopping Centre in The World 2017” at MIPIM



# BCM GRC Ltd – Rail Operating Centres



# BCM GRC Ltd – Rail Operating Centres

- 3 of 12 ROC's, which replace signalling boxes across the UK
- Cost over runs and design issues with early schemes were a major concern
- Continuity of design required to manage costs and build time
- Common building was developed to assist the design process and build programme
- High repetition of panel and installation detail improved the design time, subsequently increasing the production output and reducing the installation time.
- Lessons learned from 1<sup>st</sup> building rolled in to 2<sup>nd</sup> & 3<sup>rd</sup> buildings.



# BCM GRC Ltd – Rail Operating Centres



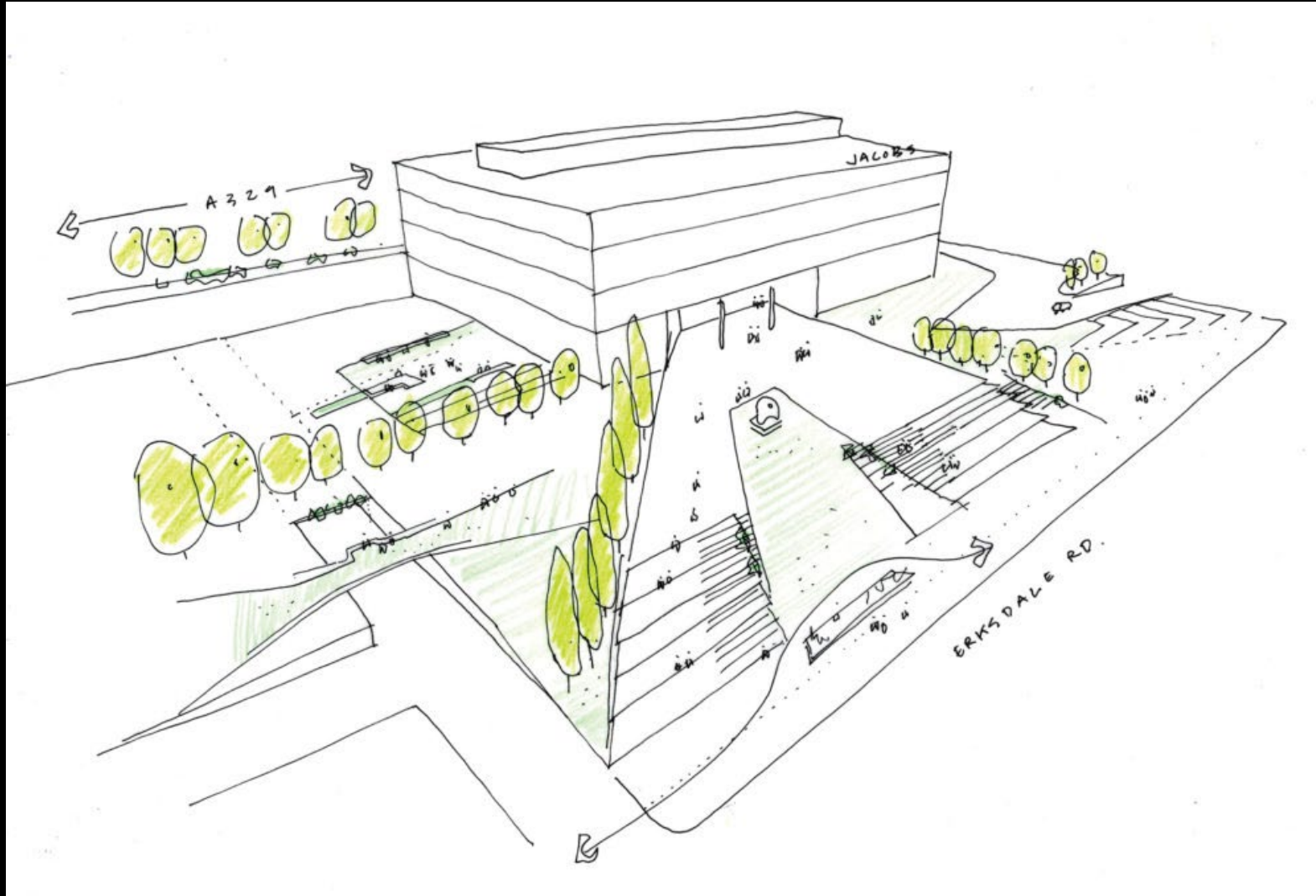
# BCM GRC Ltd – Rail Operating Centres

- 2011 – Three Bridges, Crawley
  - Client: Network Rail
  - Architect: NWR/ UMC Architects
  - Main Contractor: C Spencer Ltd
  - 1600m<sup>2</sup>
  - 1400 panels
  - 8 Weeks Production
- 2013 – Manchester
  - Client: Network Rail
  - Architect: NWR/ UMC Architects
  - Main Contractor: Morgan Sindall
  - 1600m<sup>2</sup>
  - 1500 panels
  - 12 Weeks Production
- 2014 – Romford
  - Client: Network Rail
  - Architect: NWR/ UMC Architects
  - Main Contractor: Volker Fitzpatrick
  - 1800m<sup>2</sup>
  - 1500 panels
  - 16 Weeks Production





# BCM GRC Ltd – Jacobs Building, Winnersh



# BCM GRC Ltd – Jacobs Building, Winnersh

- Part of the Winnersh Triangle Business Park – now IQ Winnersh
- GRC cladding embellishment to a fully glazed building
- GRC to compliment glazing and brise soleil whilst adding a feature band to disguise the floor structure
- Projecting steel members supported GRC and brise soleil, with holes in the joints for connections.
- Two piece unit, soffit and then nosing and upper unit in one.



# BCM GRC Ltd – Jacobs Building, Winnersh



# BCM GRC Ltd – Jacobs Building, Winnersh



# BCM GRC Ltd – Jacobs Building, Winnersh



# BCM GRC Ltd – Jacobs Building

- 2008 – Reading
- Client: SEGRO
- Architect: EPR Architects
- Main Contractor: Wates Construction
- 1700m<sup>2</sup>
- 590 Panels
- 8 Weeks Production



# BCM GRC Ltd – Other Projects



Met Qtr Shopping Centre, Liverpool, 2005



New Square Retail Park, Wolverhampton, 2013

# BCM GRC Ltd – Other Projects



Royal Welsh School of Music and Dance, Cardiff  
2009

Snowhill Building 2, Birmingham



# BCM GRC Ltd – Other Projects

## Cladding

- Athletes Village - London
- East Side Locks - Birmingham
- Kingsgate House – London
- Neo Bankside - London
- Office 9 – Hull

## Columns

- Spinningfields – Manchester
- Queen Mary University – London
- Blackfriars Station – London
- Southmead Hospital – Bristol
- Travelodge - Manchester

## Development, Offsite & Utility

- Crossrail Station Cladding – Vinci,  
Leighton Buzzard  
Full Mock Up
- Excel Exhibition Centre – London  
2000No 2m Cable Ducting
- Athletes Village – London  
200 Balconies

# BCM GRC Ltd – The Other Side



Permanent Formwork for Bridge Decking

- Aberdeen Western Peripheral Route

37 Bridges – 28,000 GRC panels - 2016

- DBFO Project 2 – Ireland

20 Bridges – 5600 GRC Panels - 2009

- M4 Extension – South Wales

Briton Ferry Bridge – 10,000m<sup>2</sup> - 1991



# BCM GRC Ltd – The Other Side

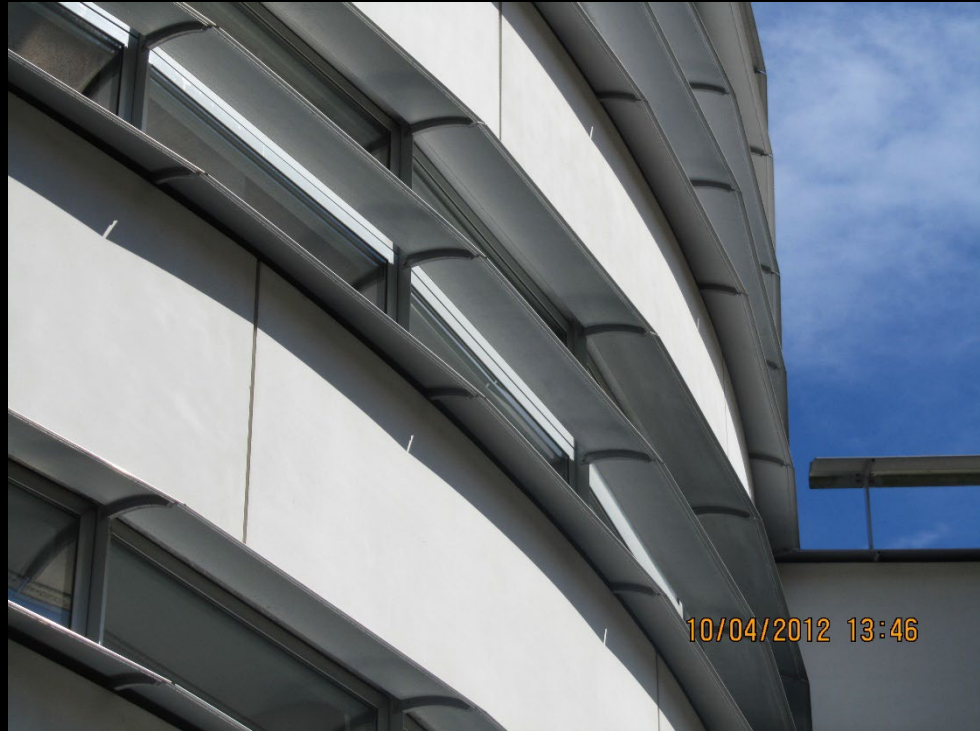


## Network Rail

- Tier One Framework Agreement Supplier to Network Rail
- 10-20,000 lin m of troughing each year since the mid 90's
- Only approved GRC troughing product for use by Network Rail



# BCM GRC Ltd – And Finally.....



Manufactured in 1999  
Photographed in 2012

And still looking good to this day!

