

DAVID HARBER

AS IF BY MAGIC



Humans have long laboured to mark the landscape.
And mark time.
Giving meaning to the world around them.

Deep in the Oxfordshire countryside the tradition continues.
A spirit of mischief, magic and ingenuity.
Put to work in creating sculptures, sundials and water features.

Made of mystery, beauty and great British craftsmanship.
Destined for private gardens, public spaces;
For broad vistas and intimate nooks around the world.

Bound to alter those spaces;
changing how we experience them.
How we think, and feel.

AS

IF

BY

MAGNIFIC





BRITISH CREATIVITY & CRAFTSMANSHIP

Set in the folds of the Oxfordshire countryside our workshop and design studio is a living monument to British creativity and craftsmanship. Our team of designers and makers carefully create works of exceptional quality and extraordinary beauty for a global audience.

Precise, detailed, scientific, mathematical. But also creative. Emotional, spiritual and expressive. Our work always nods to another dimension. Portals to other places, they are always beguiling and inspiring. Metaphysical monuments that confound the eye as much as they please it.



SENSATIONAL
IN EVERY SETTING,
UNIQUE TO YOU

Our pieces sit as comfortably in an English country garden as a public space in Florida. They have a timeless quality that makes them both classical and contemporary. At home in any setting. Urban or rural. Public or private.

Whether you are buying a classic piece, or commissioning a bespoke one, your David Harber will be unique to you. Either inscribed with names, places or thoughts that hold particular meaning.

SCULPTURES

SEEING IS NOT
BELIEVING

Made of mystery, beauty and great
British craftsmanship, our sculptures
alter your perception, and transform
the spaces they live in.



A MIRROR TO YOUR WORLD

TORUS

Standing in front of Torus you see the world around you reflected and distorted.

The sculpture itself, with its crisp edges and mirror-polished metallic surface, appears to disappear – a portal to the parallel.





IRIS TORUS

Mirror-polished stainless steel like its antecedent, Torus. But one side is peppered with petal-shaped perforations to reveal a rich interior – the colour of which you can choose.

SLATE TORUS

One side inlaid with slivers of heather-blue slate – the other mirrored.





OUR DARK MATERIALS

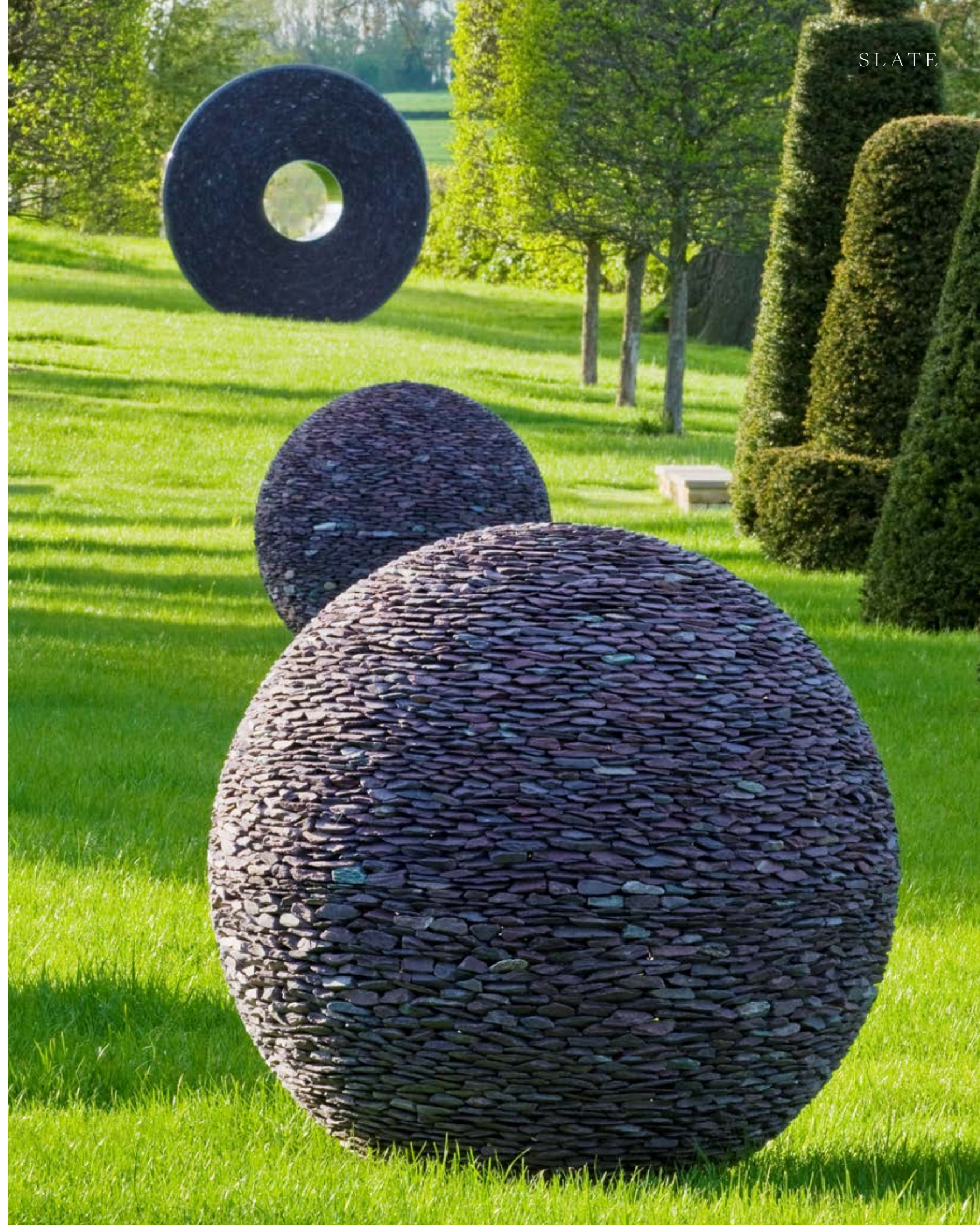
DARK PLANET

Formed from countless, irregular polished black puddle stones, or slate shards, Dark Planet is absorbing and visually arresting, a perfect sphere built of imperfect parts. Painstaking to make. Pleasurable to own.

Dark Planet has a presence day and night. It's irresistibly tactile in the light. And it glows in the darkness, as light seeps through the fissures between its stones.

DARK PLANET FOUNTAIN

Something to beguile the eye and soothe the ear. Water slides across sleek pebbles and into the pond below. Cleverly mounted to give the appearance of an orb hovering just above the water's surface.





FIRE TABLE

An imagined cross-section of the Dark Planet. A flame dances about and above a mirror-polished bowl set at the centre of a disc of black granite.

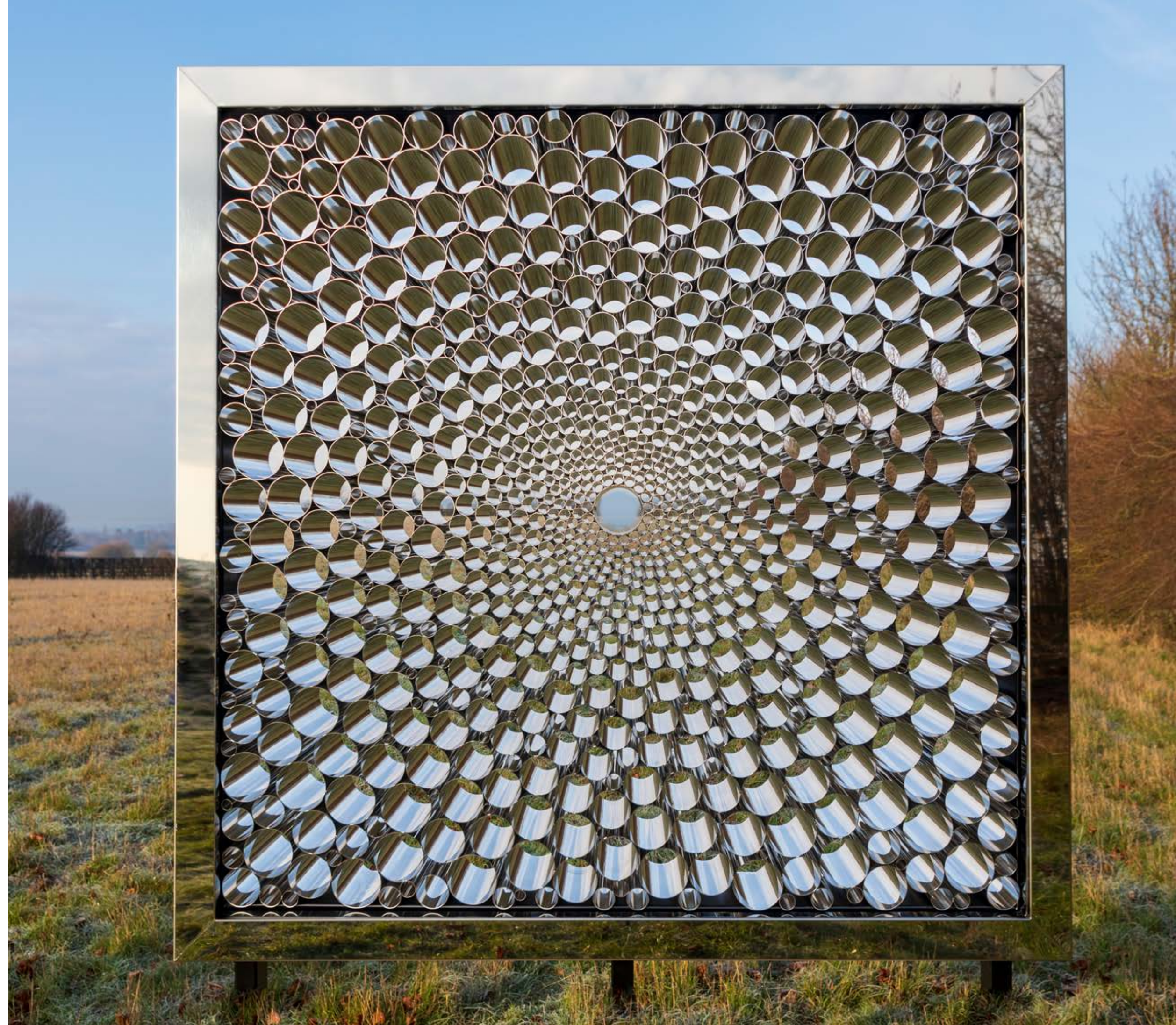
KERNEL

A kernel of oxidised steel sits at the heart of a slate or puddle stone sphere. Revealed by a mirror-polished stainless steel wedge, the oxidised steel core appears to float in space. At night a gentle, molten glow lights the core.



ALVEARE WALL

The Alveare Wall, with its honeycomb of marine-grade mirror-polished stainless steel apertures, offers a kaleidoscopic view to your surroundings. Its clean lines and pirouetting patterns of pixelated light make it a powerful addition to any space. Framed as a formal square or as a host of other geometric and organic shapes.





FLOWING BEAUTY

HYDRA

Slender, elegant, natural, the Hydra brings a free form quality to its surroundings. Created in bronze with a verdigris patina, light dances across the cluster or intertwining fronds as they twirl skywards. For a personal touch two of the fronds can be engraved.



QUIVER

Quiver is inspired by the ripples in a field of ripening wheat. The fifteen steel rods, each capped with a mirror-polished stainless-steel leaf, form a cluster of reflected images that shift gently in the wind. The reverse side of the leaves are painted red (or a colour of your choice). Each rod is as adjustable as a flower in a vase, so your Quiver can shift and change with the seasons, and the years.



ECLIPSE

Inspired by a D.H. Lawrence poem, the romantic work features two entwining rings, presenting the orbits of the Sun and Moon at the point of lunar eclipse. Bold, dramatic and tender, Eclipse is a timeless reminder of the power of love.





SPHERES OF INFLUENCE

MANTLE II

Mantle's wafer-thin crust and glowing interior remind us of planet Earth and its molten core. Made from an exquisite lattice work of verdigris bronze petals, each gilded with 23 $\frac{3}{4}$ carat gold leaf, Mantle II reflects the delicacy of our ecosystems. At night-time, gentle interior lighting adds an ethereal quality. We also make mirror-polished and oxidised stainless steel versions of Mantle II.



QUILL

Inspired by the pencil pines of the Mediterranean, Quill is a tall, silent sentry in the landscape. Its delicate structure is fashioned from dozens of interconnected petals, individually cut from bronze, mirror-polished stainless steel or oxidised steel. Subtle internal lighting brings it to life at night.

FILIUM

Filium is a stunning modern garden sphere of vine-like metal lattice work. The sculpture juxtaposes the reflective interest of a mirror-polished stainless steel exterior with a bold interior, painted in a colour of your choice. Creating a focal point of interest and intrigue, light and shadow, that draws the eye from every angle.



TEARDROP MANTLE

The Teardrop Mantle is formed from hundreds of marine grade, mirror polished stainless steel petals – carefully created to resemble a giant droplet of water.



STEEL BREEZE

Taking its inspiration from a Pink Floyd lyric, Steel Breeze, is a stunning, bold sculpture that simultaneously melts into its surroundings. The elaborate pattern lets the wind and light glide through it, distorting and reframing its surroundings. Made of mirror-polished stainless steel, two circular discs are positioned parallel to each other. The piece is circled by two elegant bands of antique tan patinated bronze, and can be internally lit.

SENTINEL

Sentinel's two halves are split vertically by two internal faces of marine grade polished steel. Each mirrored surface comes alive with reverberating reflections. The outer shell of sentinel is made from many hundreds of shards of blue-grey Welsh slate. Sentinel takes on a new guise at night, thanks to subtle, in-built uplighting.





FLORIO

Florio is a gorgeous organic form – the sculptural embodiment of a growing plant. A copper exterior creates an intriguing synthesis of warm copper hues and dappled verdigris, adding to the sculpture’s organic, plant-like aesthetic. Its natural form blends beautifully into the surroundings whilst also being able to serve as a focal point to any garden design.

ORBIS

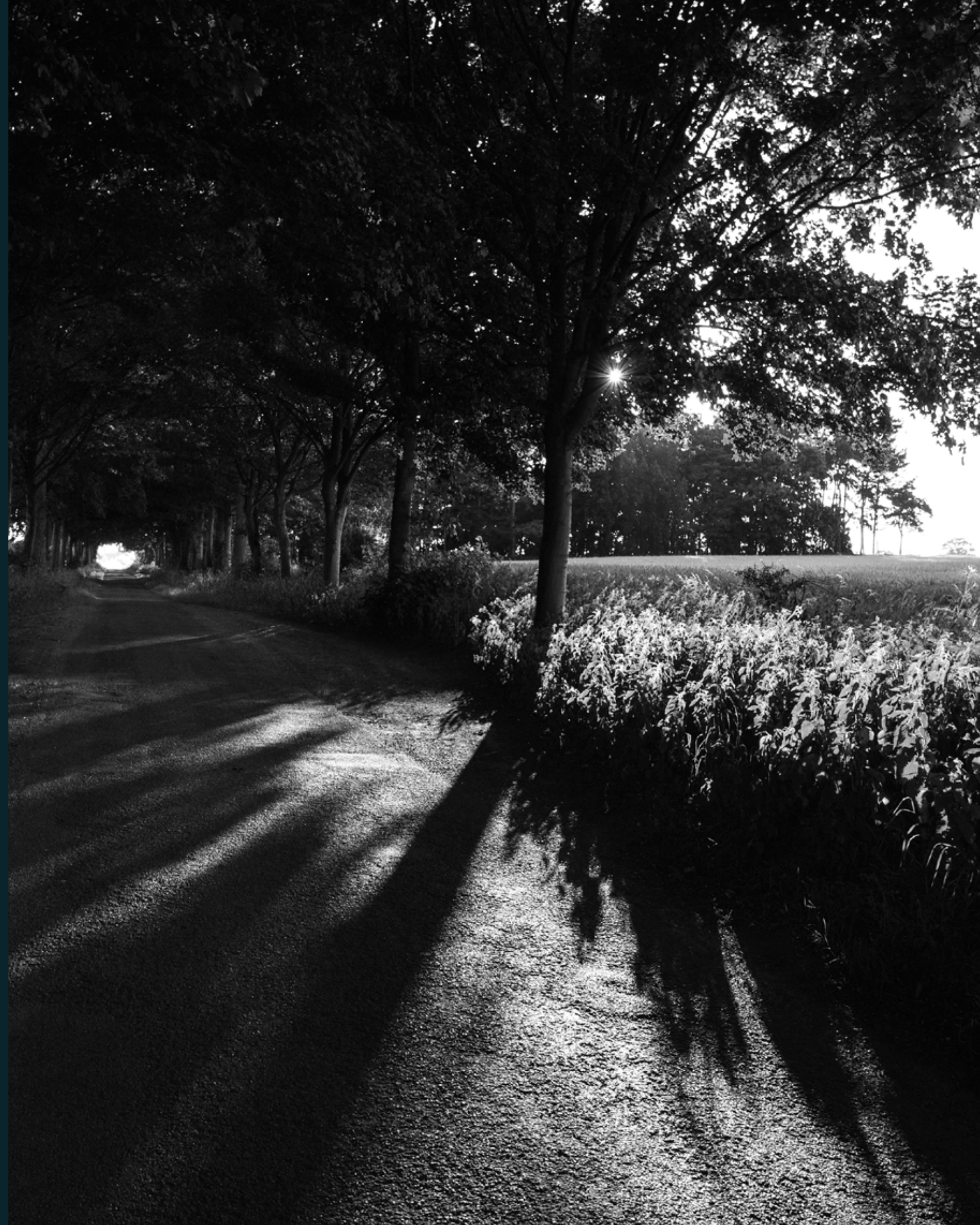
This striking piece is both balanced and dynamic, featuring morphing blades that give a sense of rolling energy. The interplay of metal, gaps and shadows creates innumerable colour mutations, especially when hit by sunlight.



SUNDIALS

PLEASURE IN THE PASSING OF TIME

Enthralling in their beauty and their strange precision, sundials and armillaries make conversation with the heavens. They are about time. But they are timeless.



CAPTURING THE HEAVENS

ARMILLARY

Invented by Greco-Roman astronomer Ptolemy nearly two millennia ago, the armillary sphere has been modelling the movements of the heavens ever since. Our Armillary uses precision-engineered hoops of brass, bronze or mirror-polished stainless steel to model the positions of celestial bodies. Bringing an object of stunning design and scientific wonder to your space – along with a remarkably accurate timepiece.





BRASS

Whether made from bronze, brass or steel, our Armillary Spheres are perfect for personalisation; mottos, names, dates, fragments of prose or poetry all work beautifully.





VERTICAL DIAL

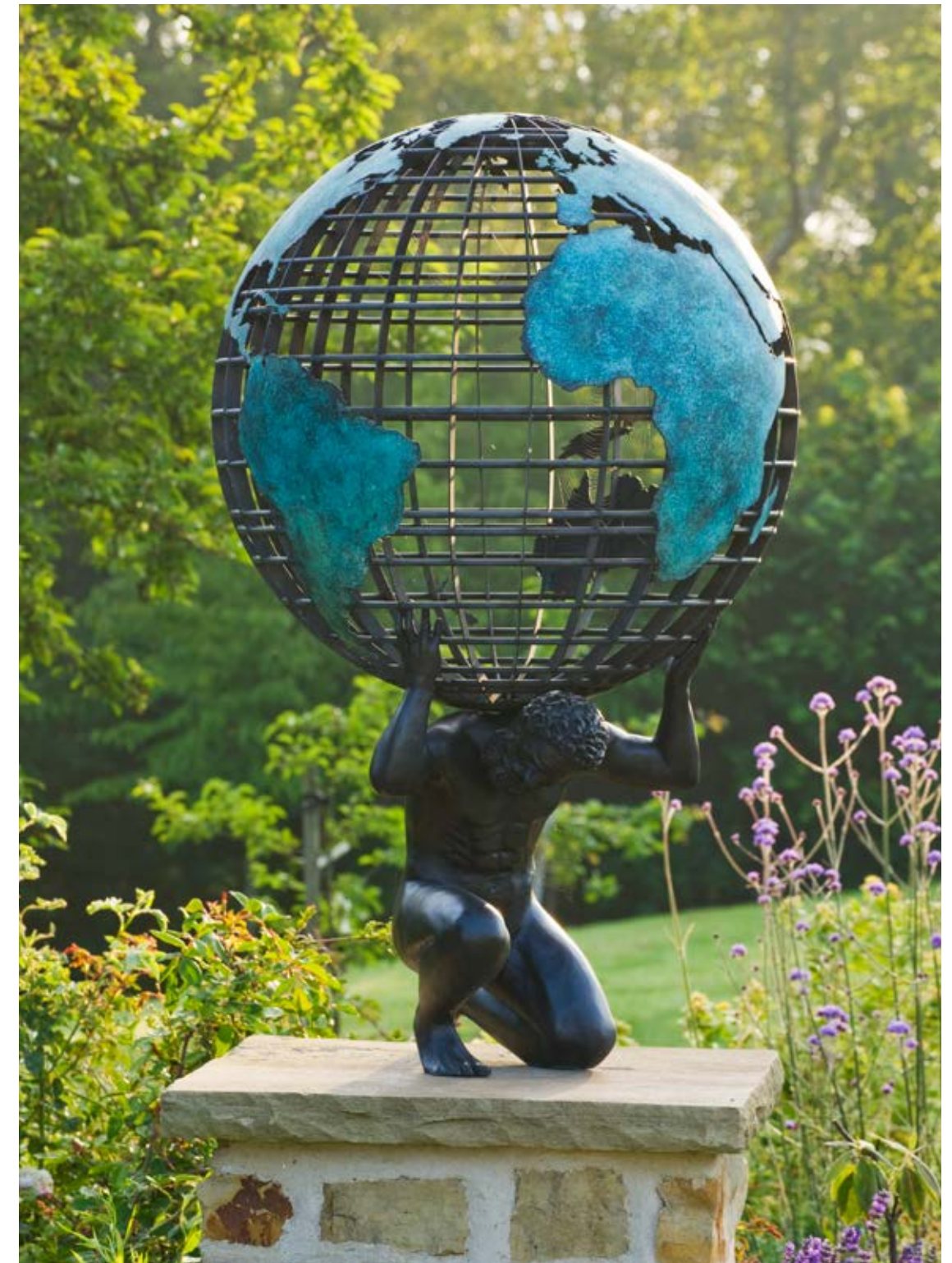
Sir Christopher Wren is just one of many architects to have taken on the three-dimensional challenge of the vertical dial to give voice and movement to a building otherwise fixed in space.

We make vertical dials from many different materials, our choice depending on the site. We calibrate our dials precisely to their latitude, longitude and declination of the wall they are sited on.



OBELISK

A monument to place and time, our stunning Obelisk marks the passing of the seasons with elegance. Created in mirror-polished stainless steel our garden Obelisk catches the eye and reflects its surroundings beautifully. Its shadow marks the spring and autumn equinoxes, winter and summer solstices, and can be used to show birthdays or significant dates.



GLOBE

Bring a sense of worldly wonder to your space with the Globe. Created in bronze, the Globe can stand on a plinth or be carried by the Greek Titan, Atlas, bearing the weight of the world on his shoulders for eternity.

WATER FEATURES

WATER. BORN.

Endlessly enthralling.
Sometimes placid,
sometimes gymnastic.
Where there is water, there is life.



ANCIENT FASCINATION



CHALICE

The Chalice sundial reimagines the relationship between fixed and moving sculptural forms. With elegant precision, flowing water clings to Chalice's mirror-polished outer surface, creating the illusion of a stainless steel hemisphere slowly revolving on its axis. It can also be illuminated – giving the piece an ethereal night time quality.



SKY MIRROR CHALICE

Sky Mirror Chalice retains Chalice's outer ring of swirling water but replaces its inner hemisphere and sundial with a mirror-polished stainless steel disc to reflect the sky.

FIRE CHALICE

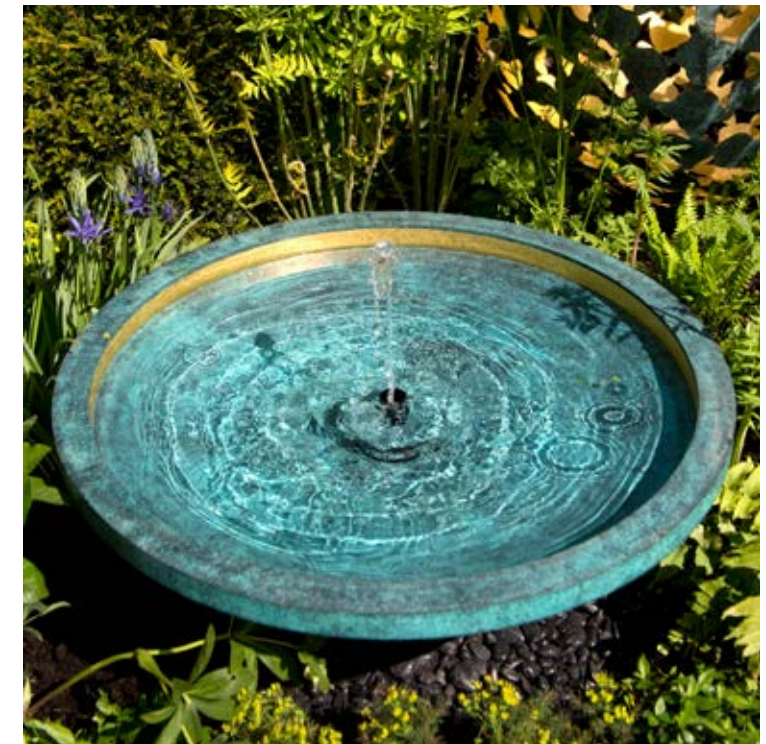
A sophisticated and eye-catching centrepiece to your outdoor space. The Fire Chalice brings together the twin elements of fire and water to dramatic effect.





MIMEO CASCADE

Mimeo Cascade is inspired by the tranquil aesthetic of traditional Arabian water features. The water gently spills from its bronze bowl creating perfect pin stripes of water. Mimeo's lighting forms an aquatic web of light that beautifully compliments the verdigris finish and decorative lattice fretwork around the rim.



EKHO

With a classical bronze verdigris bowl and 23 $\frac{3}{4}$ carat gold-leaf waterline, Ekho makes a stunning addition to any space. With built-in LED lighting, it can be installed in an existing pool or form part of a new, integrated water feature.

AN ADDED DIMENSION

WATER WALLS

Adding structure and drama to interior and exterior settings, our water walls are sensational statements. Using a range of carefully considered designs and materials, our walls can be made to your specific requirements.



PETAL

Hundreds of scale-shaped, mirror-polished stainless steel petals, with each row offset against the last, force the water to zig-zag its way down in a shimmering cascade.





FILIGREE

Framed by a verdigris bronze design, water flows over a mirror-polished stainless steel surface.

STAINLESS STEEL

A simple mirror-polished stainless steel water wall creates a stunning garden backdrop.

INTERIORS

THE INTERIOR WORLD

Bringing depth, intrigue and excitement to exquisite interiors around the world.



A BEAUTIFUL POINT OF VIEW

TURBINE

The Turbine wall sculpture was inspired by the fins of a jet engine. Its precisely juxtaposed metal blades make for an exciting interplay of light and shadow. Turbine's appearance changes according to your vantage point – an effect we've exaggerated by marking the blades with carefully positioned notches.





MIRAGE

Within Mirage, a convex mirror distorts all it reflects, drawing the viewer into another dimension. Its verdigris outer body surrounds the burnished warmth of hammered copper which in turn frames a bevelled mirror. Mirage's integrated LED lights give an ethereal halo of copper reflections.



AEGIS

Five exquisitely patterned layers of mirror polished stainless steel, each backed by programmable LED lights which radiate through the sculpture and create a halo-like glow.

The layers of coloured reflection – which can be customised to include a range of colours – create a mesmerising appearance of multiple voids and a sense of great depth.

LIMITED EDITIONS

UNLIMITED
IMAGINATION

Complex, spectacular pieces that
we make in restricted numbers.





REALITY BITES

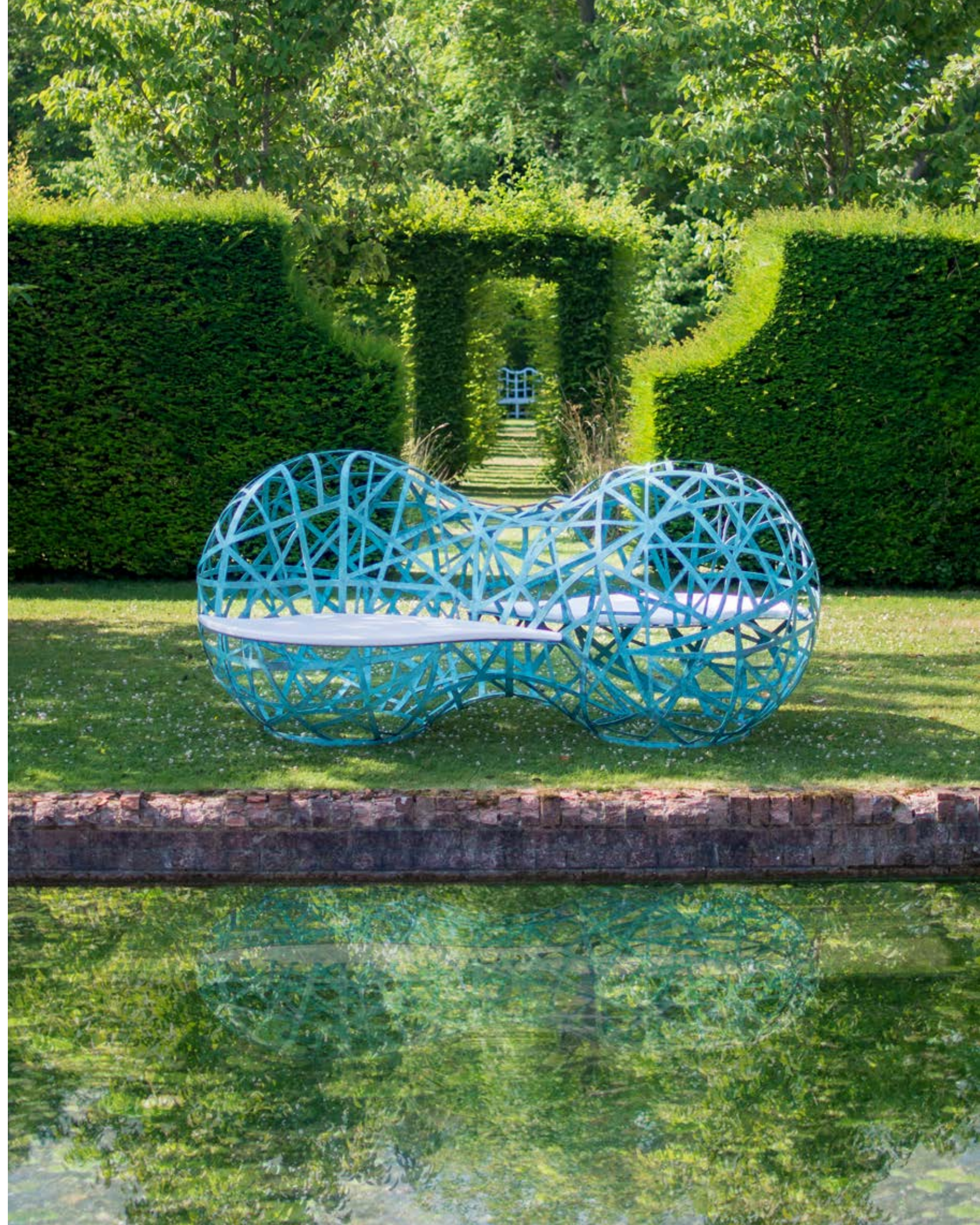
BI TE

Like bites out of an enormous fruit, Bite is a playful and dramatic piece of sculpture. Three concave curves of mirror-polished stainless steel cut through a verdigris copper shell. The carved out shapes capture and reflect the surroundings, creating drama and interest. As the vantage point changes, the seamless transitions from perfect sphere to inlaid parabolic mirror create beautiful optical illusions.

SITTING BEAUTIFULLY

BENCH OF CONTEMPLATION

This contemporary loveseat is an object of desire in itself. Forged from hundreds of strands of verdigris bronze, every line follows the twisting, curving trajectory of DNA's double helix, creating a delicate yet durable frame for two natural wood or Corian® seating panels. Also available in oxidised steel or stainless steel painted a colour of your choice.



NYNEVE

Inspired by the Arthurian legend of the Lady of the Lake, Nyneve rises like an enchantress from the water. This 3.5 metre bronze sculpture's organic shape and aerofoil form reflects both light and sound, whilst giving the illusion of a twisting upwards flow.





QUAD

Quad is a sculpture of teetering quadrilateral shapes, held in a state of implausible balance. Brilliantly mirrored on the inside and finished externally in the colour of your choice. Quad is at once unstable and poised. Dramatic and reflective. Continually rewarding.



SYCAMORE

Made in collaboration with jewellery designer Annoushka Ducas, Sycamore has been created in stainless steel and painted a rich metallic champagne gold to reflect the gold used by Annoushka in her fine jewellery. A beautifully curved rotating seat forms the base of the piece. Flutes rise up from the seat back forming an abstract organic pattern, like the sycamore seed itself. The effect is a mesmerising array of shadows that transform with the angle of the sun – or the rotation of the sculpture.



GEMINUS

Inspired by the intricate beauty of coral, Geminus is an elaborate and captivating sculpture. The piece is made of verdigris bronze petals, gilded with 23³/₄ carat gold leaf. The contrast between the two finishes gives a fascinating glow to Geminus – an effect magnified at night by gentle integral lighting.



BESPOKE

SINGULAR, SPECTACULAR
& ENDURING

Our bespoke pieces are deep
collaborations. Imagined and made in
careful response to people and places.





FRAMING THE SUN

ORTUS

For this commission we were tasked with capturing the exact moment of sunrise, every day of the year at a special place on a private island, off the south coast of England.

We re-imagined the iconic Torus to reflect the rugged local landscape and act as a stunning frame for the rising sun. The Ortus was set on an accurate compass plate to allow for daily realignment with the precise point on the horizon where the sun rises every morning.

SOUND DIMENSION

WIND CHIMES

Working alongside Canada's Donohoe Design we designed, built and installed giant wind chimes in a garden in Vancouver. The garden is influenced by Asian ideas, and our wind chimes form its centrepiece.

Along with aesthetic considerations, every element of the work had to be carefully calibrated to produce the perfect tone and volume.

The final result comprises eight two metre high, quarter tonne blades of COR-TEN® steel, each chemically weathered for an even finish in warm chestnut. Each blade houses a vertical insert of a traditional Asian woodwork pattern containing an individual character plaque of special meaning to the client. The strikers are mirror-polished stainless steel tubes, connected at the top by a curved beam. The wind chimes encircle a large Chalice water feature.



EYE OF THE BEHOLDER



A EON

Defiant, imposing and captivating, Aeon evokes the 'Evil Eye' – the protective symbol of Middle Eastern culture. Aeon was designed as a captivating centrepiece for the David Harber garden at the RHS Chelsea Flower Show, sponsored by Savills International. The cast bronze artwork creates a monumental presence that once seen can never be forgotten.

IT TAKES A TEAM

We're creatives, craftspeople, technicians and engineers, working hard to create and deliver exceptional pieces for public and private spaces the world over.

From the moment you commission a David Harber piece, to the moment it's delivered and installed, you'll have a dedicated team at your disposal. Ready to help you through the process and answer any creative, technical or logistical queries that arise.

Personal relationships are vital to the David Harber experience. So we work closely with you to make sure you get exactly what you want.

We can work directly with you, or in collaboration with your own designer, contractors, consultants and project managers.

Our team can offer advice at every stage of the process – from engraving, materials and finishes to the more technical elements involved in a water feature installation.

If you'd like to meet the team, the door of our Oxfordshire workshop and design studio is always open.



EXPERIENCE OUR WORK

You can see, touch and play with our work in its beguiling glory at these show gardens. Equally, we love to visit our clients in their natural habitat and discuss their plans for our pieces.

DAVID HARBER WORKSHOP, ASTON UPTHORPE, OXFORDSHIRE

Nestled in the shadow of a Bronze Age hill fort, our rural workshop is the epicentre of everything we do. Not just a showroom but also a practical design and engineering environment, it offers an unbeatable insight into the creative process that lies behind our work. We're less than an hour from Central London.



EATON SQUARE, LONDON

The private gardens of Eaton Square offer the perfect opportunity to see first-hand a range of designs in a gracious city setting. Call us at your leisure to arrange a convenient time to visit.

D&D BUILDING, NEW YORK

Our rooftop terrace adjoining the Christopher Peacock Showroom is at the famed Decoration & Design Building on Manhattan's Third Avenue, between 58th and 59th Streets. We ask that you book appointments with us in advance.

DUBAI

There are a number of pieces at the British Design House in Dubai. Lighting designer John Cullen has curated the contents of an exquisite villa, where our pieces sit alongside furniture, lighting and more made by exceptional British designers.



SHIPPING & INSTALLATION

Your David Harber commission is never complete, no matter where you are in the world, until it's delivered, installed and functioning to your utmost satisfaction.

DISTANCE NO OBJECT

David Harber works can be found all around the world. With 30 years of experience in packaging and shipping we are always ready to advise and support the technicalities of each installation. When requested or required our team can undertake the installation.

All commissions for the UK mainland are delivered and installed by members of our workshop team. This includes alignment, calibration and other mechanical fine tuning. We'll advise you well in advance if other qualified personnel are needed (such as an electrician).

SAFE AND SECURE

We take great care in making sure that your commission is installed safely, and exactly how you envisioned it. We can help advise if security is of a particular concern.

ELECTRICS & LIGHTING

The light fittings we deploy in most of our pieces (all bar those mounted on a plinth) are of the highest quality. Nonetheless, if your commission has an electrical connection then it must be made by a qualified electrician.

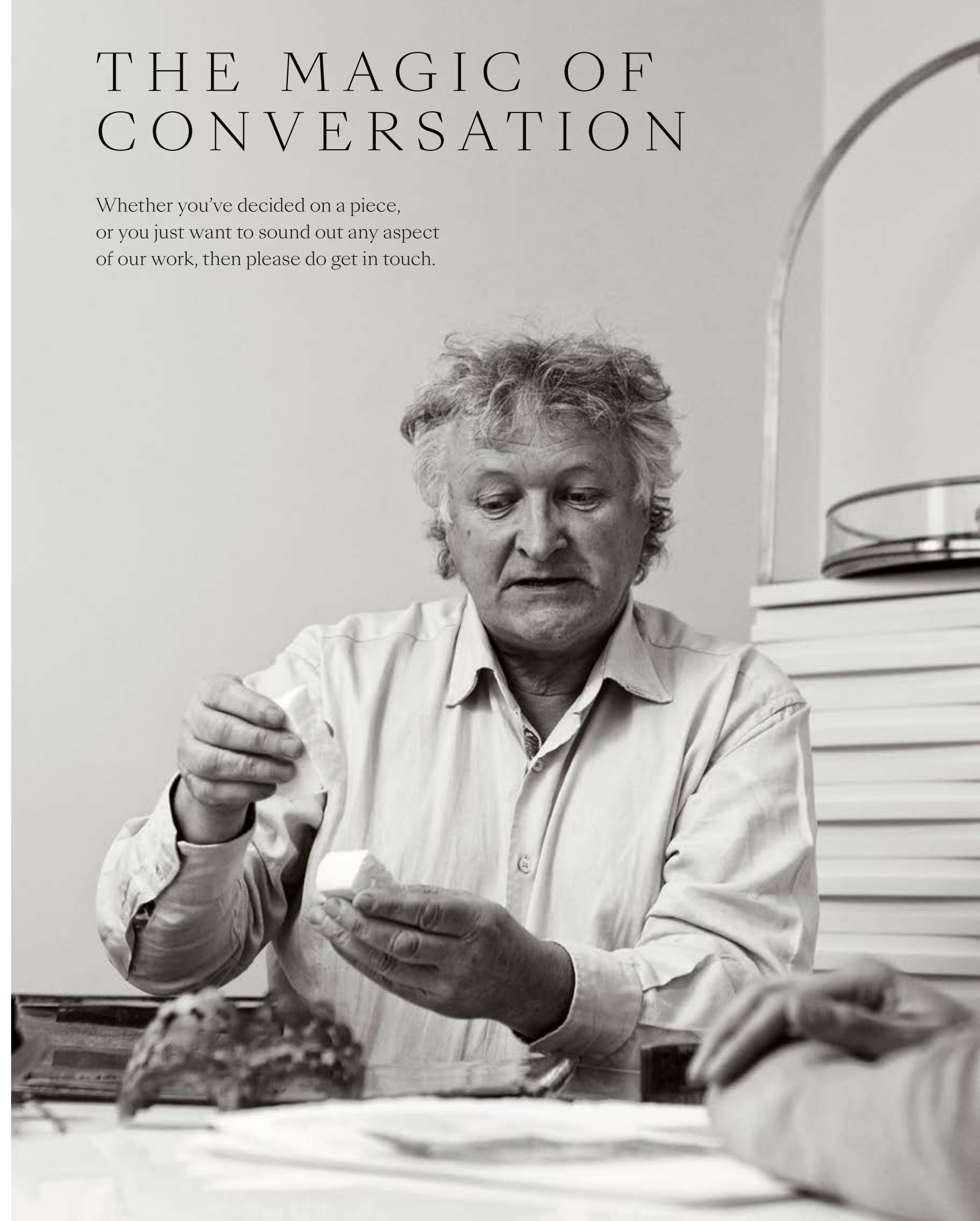
AFTERCARE

All David Harber installations are built to stand the test of time, whether indoors or out. We provide a detailed Maintenance Manual to ensure that your piece continues to enchant and delight for decades to come. Water features by their very nature require a specific maintenance programme to keep performing brilliantly.

All our pieces are covered by a Warranty and our After Care team is here to support you long after installation.

THE MAGIC OF CONVERSATION

Whether you've decided on a piece, or you just want to sound out any aspect of our work, then please do get in touch.



CONTACT US

TEL

+44 (1235) 859300
+1 (312) 8951586

EMAIL

sales@davidharber.com

ADDRESS

Blewburton Barns,
Hagbourne Road,
Aston Upthorpe,
Oxfordshire,
OX11 9EE, England

CREDITS

Image page 46/47 designed by
Jo Thompson, photo Rachel Warne

Cover manufactured using 15% waste from wool
processing, 40% recycled fibres and 45% FSC sourced
paper. Internal pages printed on 100% recycled paper.