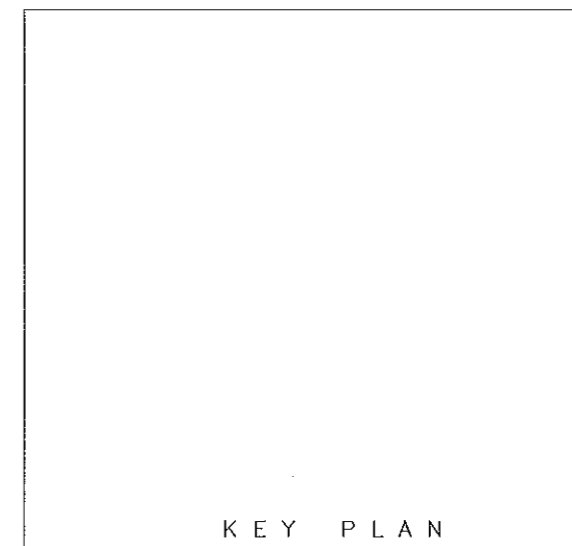


WEST ELEVATION

SAMPLE



KEY PLAN

REV	DESCRIPTION	BY	CH	DATE

CLIENT  
**BCM GRC Limited**  
 Unit 22 Civic Industrial Park  
 Whitchurch  
 Shropshire  
 SY13 1TT

Visit [www.bcmgrc.com](http://www.bcmgrc.com)  
 Tel. 01948 665321  
 Fax 01948 666381  
 E-mail [info@bcmgrc.com](mailto:info@bcmgrc.com)



STATUS

PROJECT

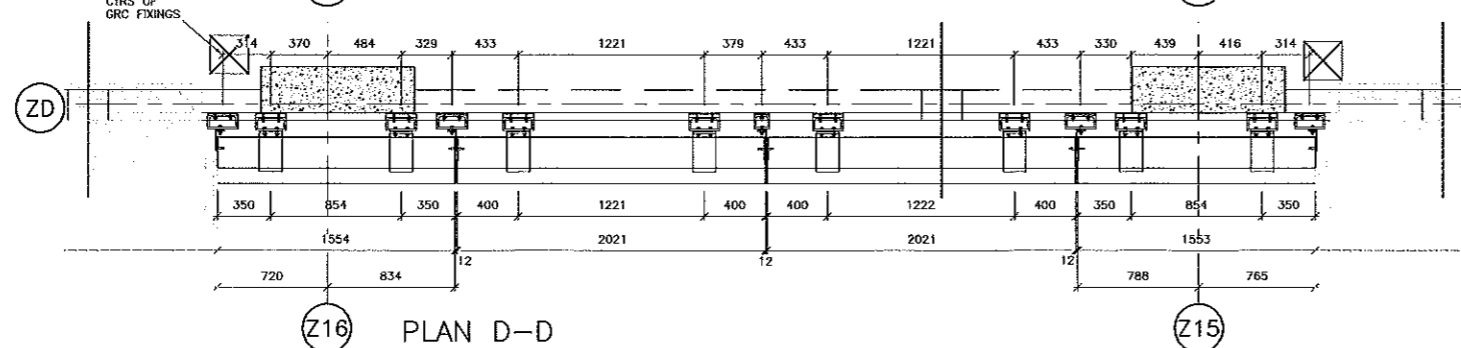
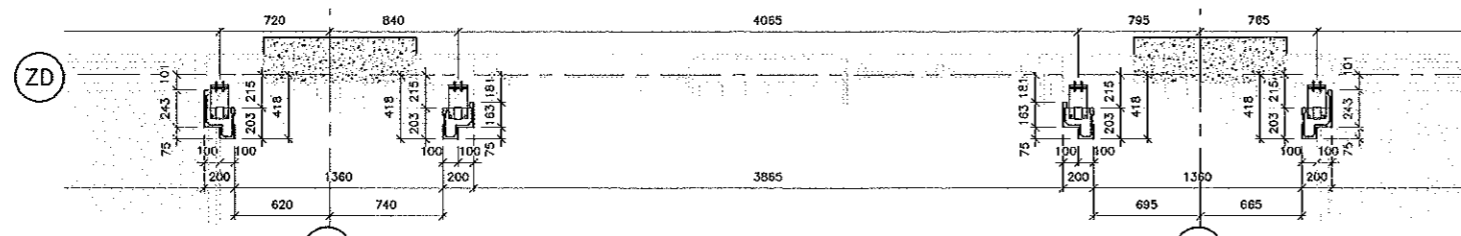
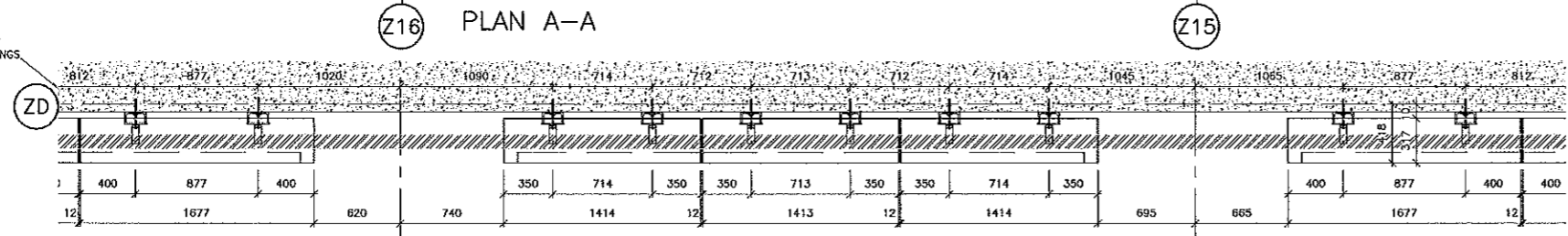
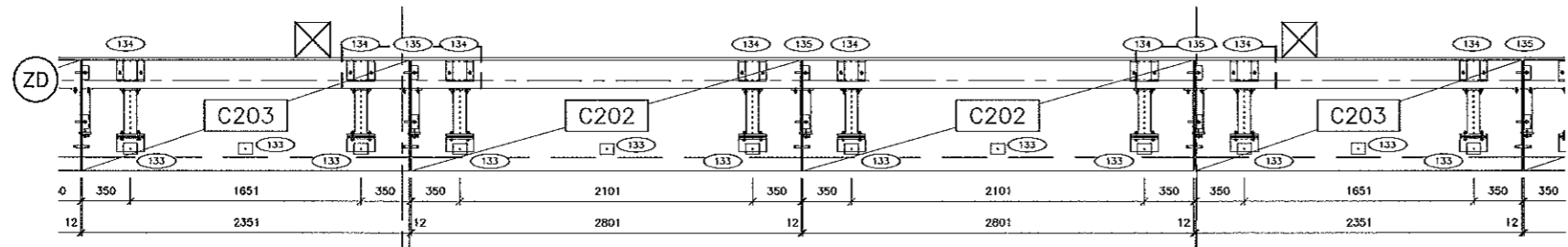
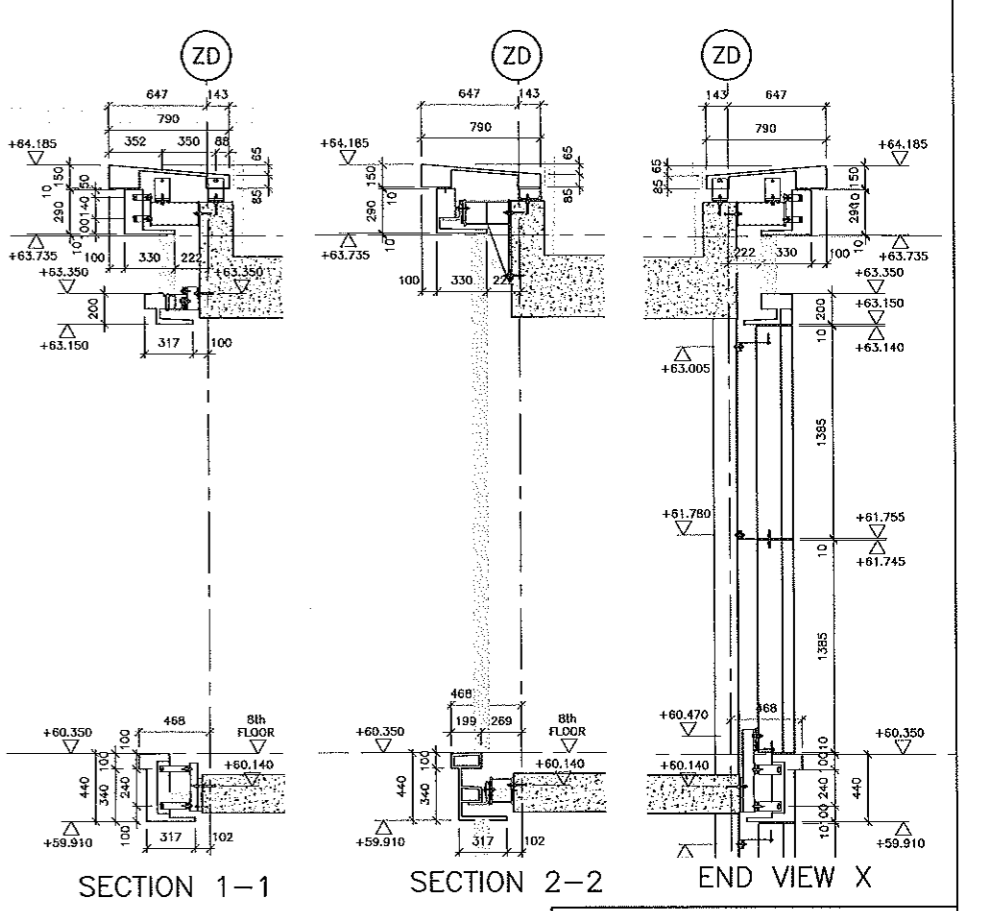
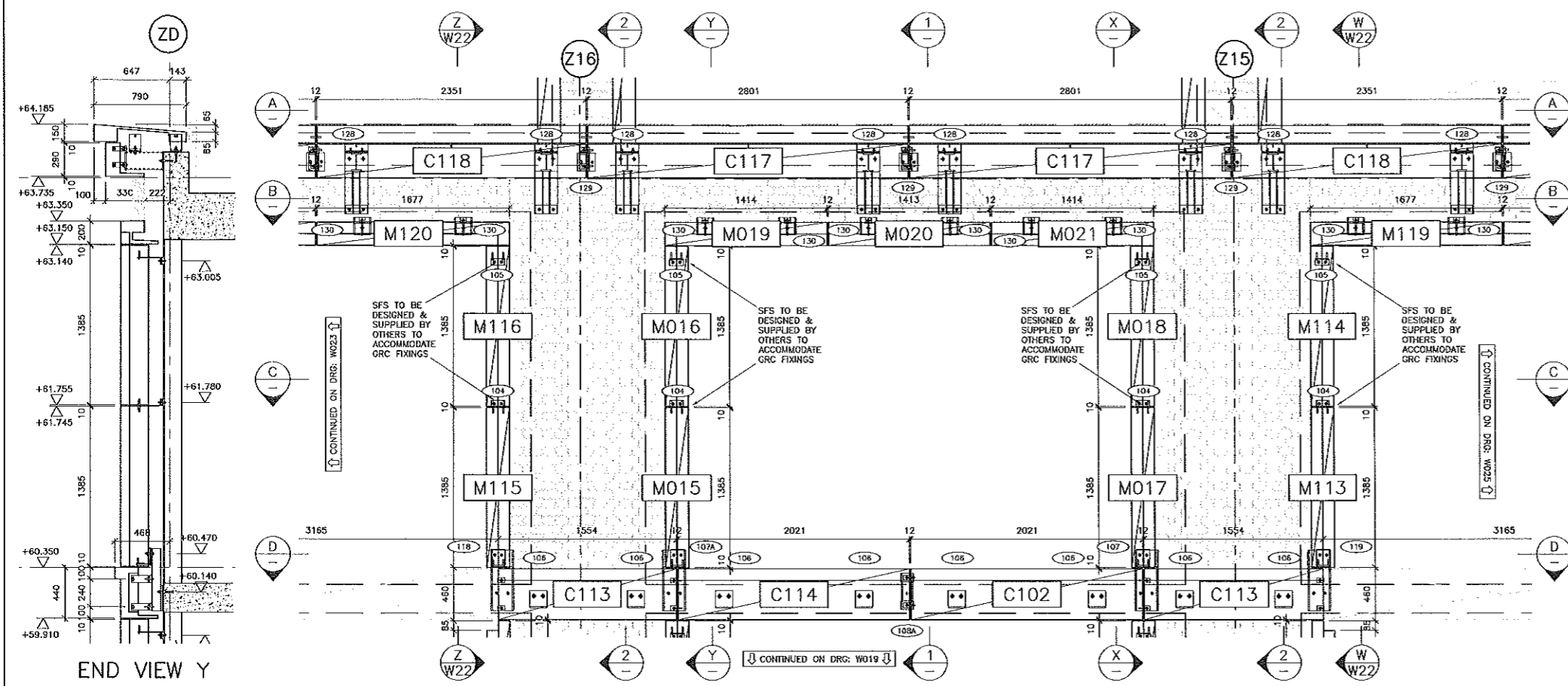
TITLE  
**WEST KEY ELEVATION**

 SMART CROSBY INTERNATIONAL  
 3 Grosvenor House,  
 Melton Road,  
 Oakham,  
 Rutland,  
 LE15 6AX

DESIGN & CONSULTING ENGINEERS  
 t: 01572 756961  
 e: [enquiries@smartcrosby.com](mailto:enquiries@smartcrosby.com)  
 w: [smartcrosby.com](http://smartcrosby.com)

This drawing and design is the sole property of SMART CROSBY INTERNATIONAL LIMITED. It must not be copied by any means nor be shown to outside parties without prior written consent.

Drawn	TDH	Chkd	BB	App	IB
Scale	1:150	Size	A1	Date	
Drawing No.		Rev			



ALL PANEL TO PANEL JOINTS TO BE MASTIC POINTED (Min MAF 50%)

ALL SCHEDULED QUANTITIES TO BE CHECKED PRIOR TO MANUFACTURE

FIXING SCHEDULE		GRC SCHEDULE	
Fixing Ref.	Quantity	Panel Ref.	Quantity
104	4	C102	1
105	4	C113	2
106	8	C114	1
107	1	C117	2
107A	1	C118	2
108A	1	C202	2
118	1	C203	2
119	1	M015	1
128	8	M016	1
129	4	M017	1
130	10	M018	1
133	12	M019	1
134	8	M020	1
135	4	M021	1
		M113	1
		M114	1
		M115	1
		M116	1
		M119	1
		M120	1

- Do not scale.
- This drawing is the property of BCM GRC Ltd and may not be copied altered or distributed without the consent of BCM GRC Ltd.
- Tolerances -3mm/+3mm.
- All cast in sockets are stainless steel, therefore stainless steel bolts are required in all cases. Isolation washers will need to be implemented where galvanised steel occurs.
- Torque setting for standard M8 ST/ST cast in sockets is 10.6Nm.

**NOTES**

Items considered during detailing: Drg checked: \_\_\_\_\_

Lifting method:  CAD  [H]

Fixing method:  Design  [D]

Manufacturing methods:  BCM GRC Ltd  [M]

REV	DESCRIPTION	BY	CH	DATE

CLIENT

**BCM GRC Limited**  
Unit 22 Civic Industrial Park  
Whitchurch  
Shropshire  
SY13 1TT

Visit [www.bcmgrc.com](http://www.bcmgrc.com)  
Tel. 01948 665321  
Fax 01948 666381  
E-mail [info@bcmgrc.com](mailto:info@bcmgrc.com)

**REFERENCE KEY**

(401) = FIXING DETAIL REFERENCE.

[M001] = GRC PANEL REFERENCE

FOR GA LOCATION PLEASE SEE KEY ELEVATION DRAWING C-0273-BCM-1000

SAMPLE

**THIS DRAWING IS ISSUED FOR GRC PURPOSES ONLY. ALL OTHER CLADDING AND WINDOWS ARE TO BE DESIGNED AND ENGINEERED BY OTHERS**

STATUS \_\_\_\_\_

PROJECT \_\_\_\_\_

TITLE  
**WEST ELEVATION  
LEVEL 8th - 9th  
GL Z16 - Z15**

SMART CROSBY INTERNATIONAL  
3 Grosvenor House,  
Melton Road,  
Oakham,  
Rutland,  
LE15 6AX

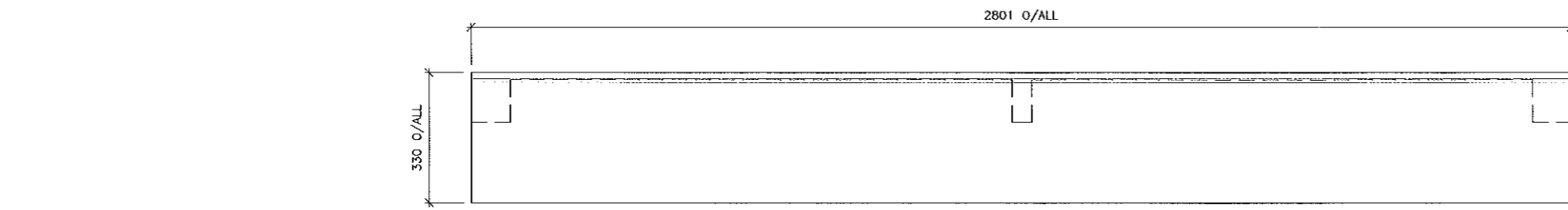
DESIGN & CONSULTING ENGINEERS  
t: 01572 759961  
e: [enquiries@smartcrosby.com](mailto:enquiries@smartcrosby.com)  
w: [smartcrosby.com](http://smartcrosby.com)

This drawing and design is the sole property of SMART CROSBY INTERNATIONAL LIMITED. It must not be copied by any means nor be shown to outside parties without prior written consent.

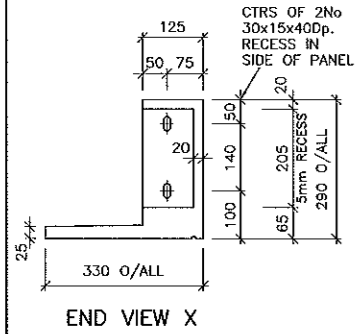
Drawn	T.O.H	Chkd	BB	App	IB

Scale 1:25 Size A1 Date \_\_\_\_\_

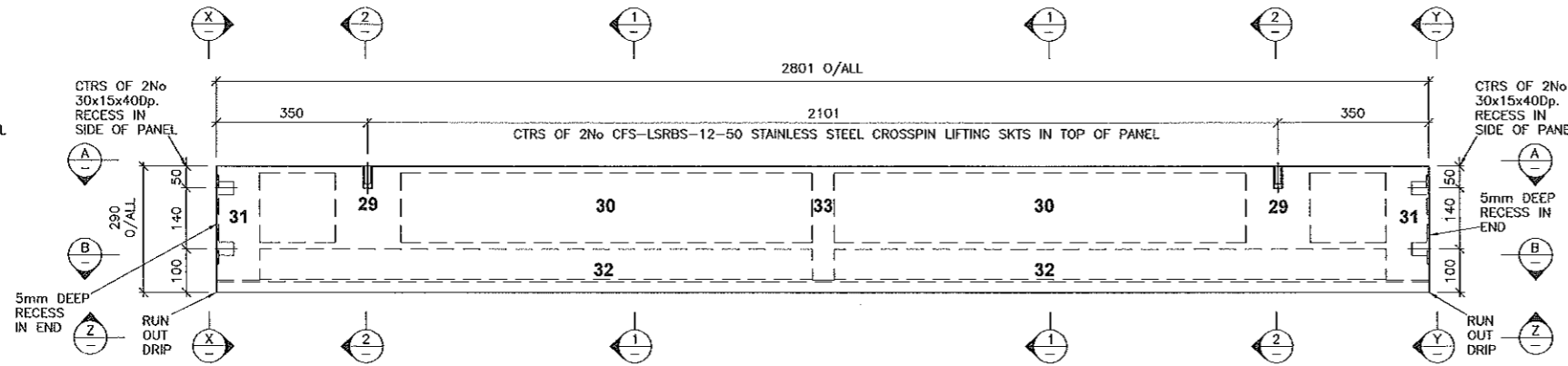
Drawing No. \_\_\_\_\_ Rev \_\_\_\_\_



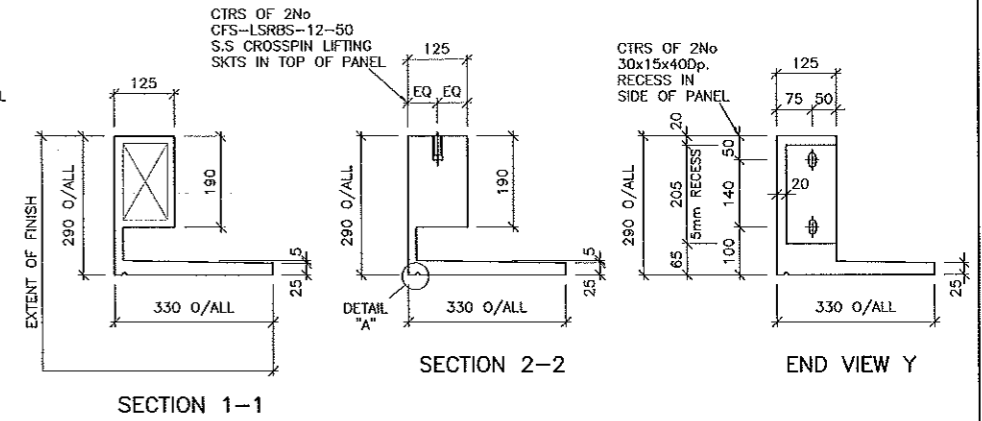
VIEW Z



END VIEW X



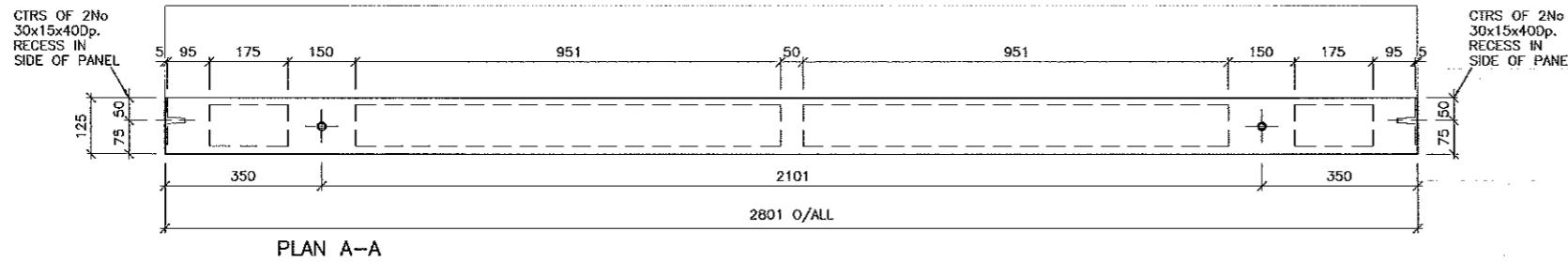
GRC FRONT ELEVATION  
GRC PANEL TYPE C117  
APPROX WEIGHT = 155kg



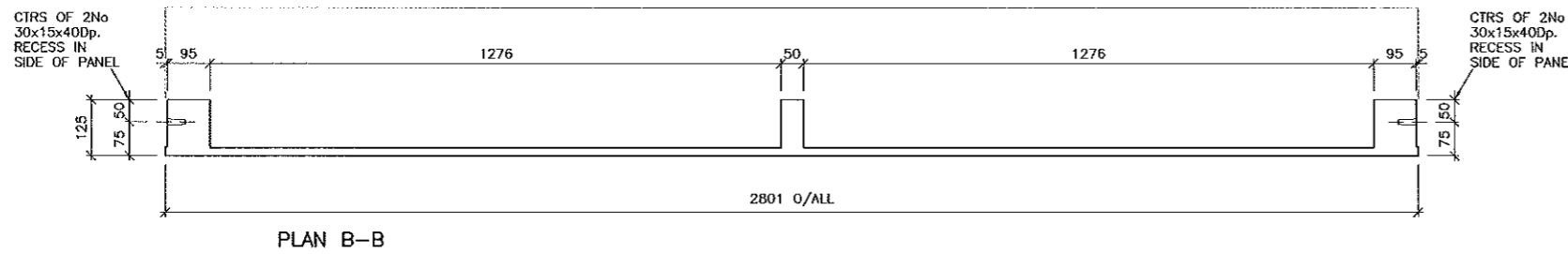
SECTION 1-1

SECTION 2-2

END VIEW Y

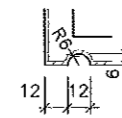


PLAN A-A



PLAN B-B

SAMPLE



A - DRIP DETAIL

**DRAWING NOTES**

1. PANELS ARE TO BE MANUFACTURED FROM GRADE 18 SPRAYED GRC
2. BALANCING CHAINS TO BE USED TO ENSURE EQUAL LOADS ARE APPLIED TO LIFTING SOCKETS WHEN GRC PANELS ARE LIFTED
3. AT DEMOULDING THE STRENGTH OF GRC MUST BE AT LEAST 25% OF FINAL STRENGTH
4. DEMOULDING SOCKETS TO MANUFACTURERS DETAILS
5. ENSURE CHAIN ANGLES ARE KEPT BELOW 15° IN ALL CASES
6. ANY VOID FORMERS CAST INTO GRC PRODUCTS ARE THE MANUFACTURERS RESPONSIBILITY

REV	DESCRIPTION	BY	CH	DATE

**CLIENT**

**STATUS**

**PROJECT**

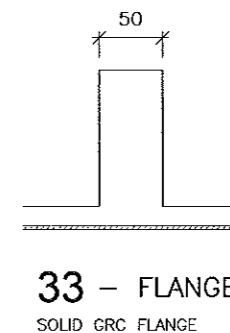
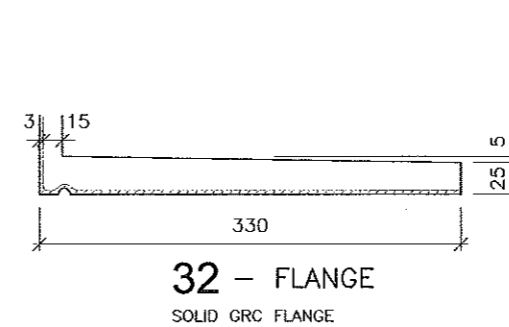
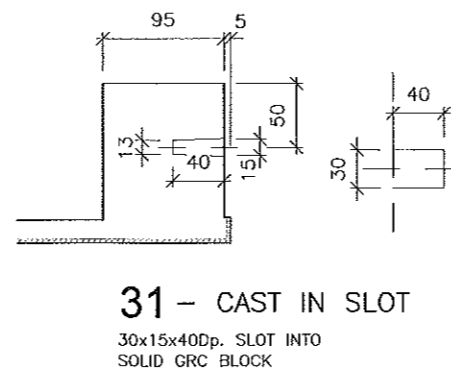
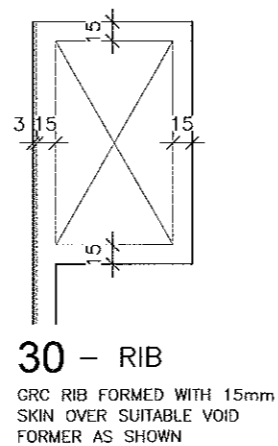
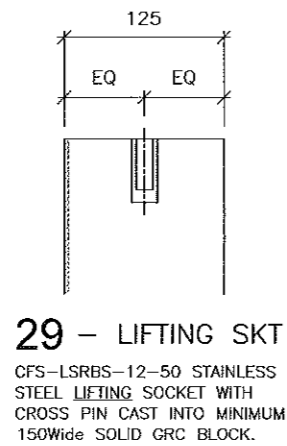
**TITLE**

GRC PANEL DETAIL C117

DESIGN & CONSULTING ENGINEERS  
t: 01572 756961  
e: enquiries@smartcrosby.com  
w: smartcrosby.com

This drawing and design is the sole property of SMART CROSBY INTERNATIONAL LIMITED. It must not be copied by any means nor be shown to outside parties without prior written consent.

Drawn	TDH	Chkd	BB	App	JD
Scale	1:8/1:3	Size	A1	Date	
Drawing No.					Rev

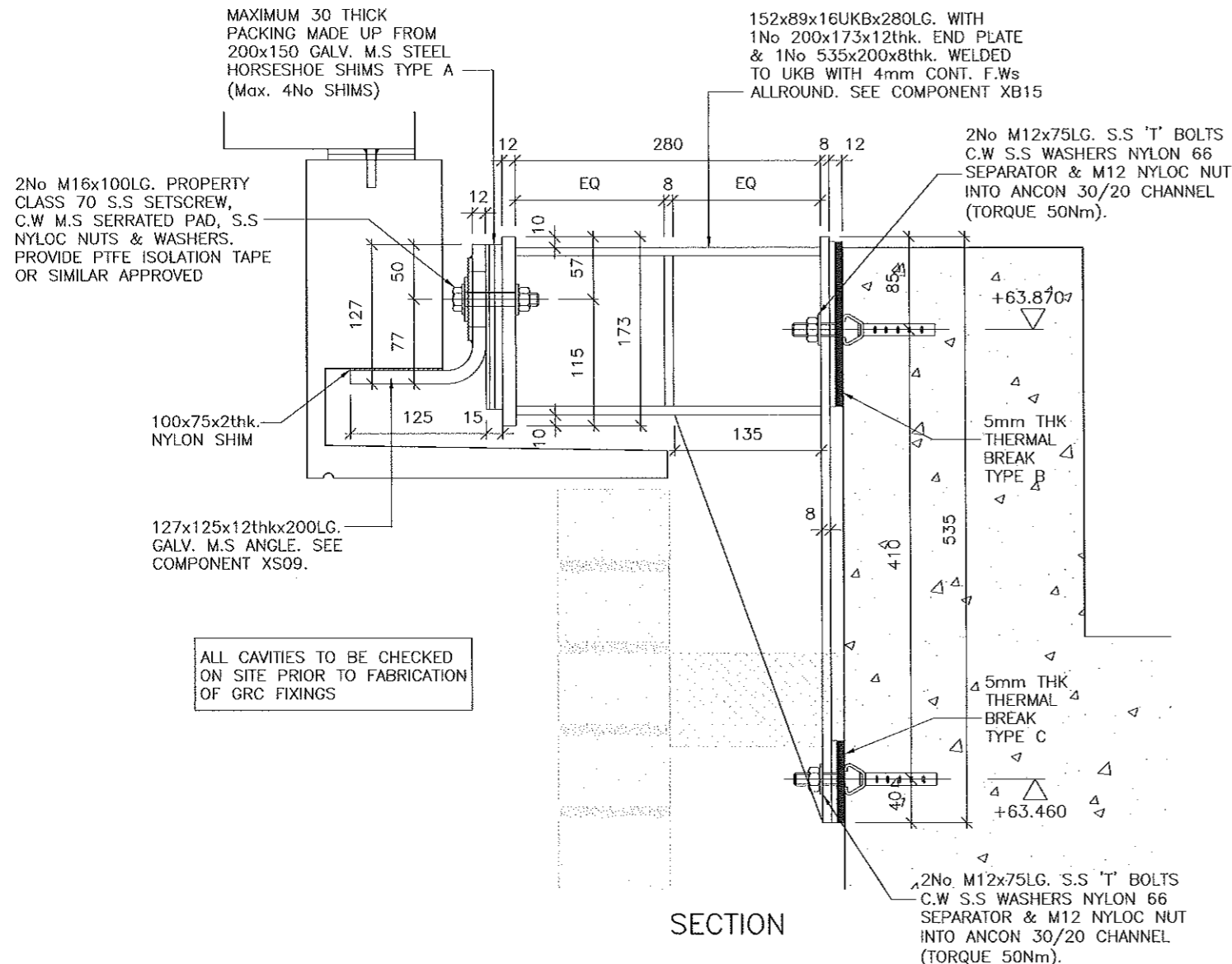


DRAWING NOTES

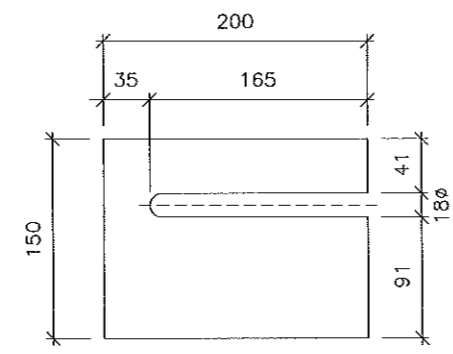
1. ALL DISSIMILAR METALS IN CONTACT TO BE ISOLATED WITH MINIMUM 2mm THICK ISOLATION PACKERS OR WASHERS TO AVOID BI-METALLIC CONTACT. ALL ISOLATION PACKERS/WASHERS TO BE NYLON 6/6. ALL BOLTS/ALLTHREADS TO BE SEPARATED FROM BRACKETS USING ISOLATION TAPE

2. BRACKETS & FIXINGS TO BE GALV. M.S U.N.O. PLEASE REFER TO PROJECT SPECIFICATION FOR GALV. M.S SPEC.

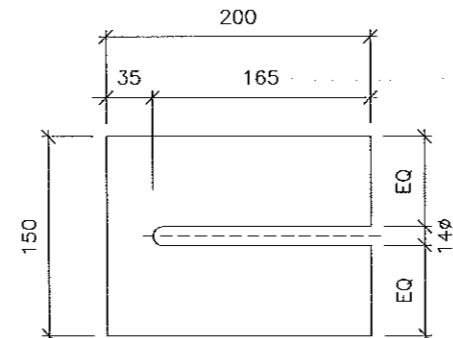
3. ALL FIXINGS TO BE INSTALLED IN ACCORDANCE WITH MANUFACTURES RECOMMENDATIONS



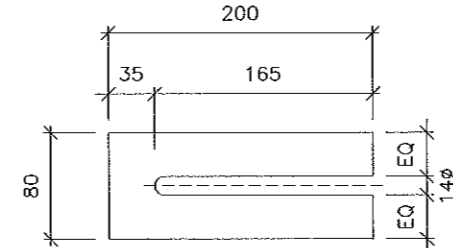
ALL CAVITIES TO BE CHECKED ON SITE PRIOR TO FABRICATION OF GRC FIXINGS



GALV. M.S PACKING SHIMS @ 2, 3, 5 & 10thk. TYPE A



THERMAL SHIM @ 5thk. TYPE B



THERMAL SHIM @ 5thk. TYPE C

SAMPLE

THIS DRAWING IS ISSUED FOR GRC PURPOSES ONLY. ALL INSULATION, AND DPC'S ETC. TO BE DESIGNED AND CO-ORDINATED BY OTHERS


REV	DESCRIPTION	BY	CH	DATE

Drawn	TH	Chkd	BB	App	IB
Scale	1:5	Size	A3	Date	
Drawing No.					Rev.

CLIENT

Unit 22 Civic Industrial Park  
Whitchurch Shropshire  
SY13 3TT  
www.bcmgrc.com

Tel: 01948 665321  
Fax: 01948 666381  
info@bcmgrc.com

SMART CROSBY INTERNATIONAL  
3 Grosvenor House,  
Melton Road,  
Oakham,  
Rutland,  
LE15 6AX

DESIGN & CONSULTING ENGINEERS

t: 01572 756961  
e: enquiries@smartcrosby.com  
w: smartcrosby.com

PROJECT

TITLE

GRC FIXING TYPE 128

STATUS

This drawing and design is the sole property of SMART CROSBY INTERNATIONAL LIMITED  
It must not be copied by any means nor be shown to outside parties without prior written consent

CLIENT



Unit 22 Civic Industrial Park  
Whitchurch Shropshire  
SY13 1TT

www.bcmgrc.com

Tel: 01948 665321  
Fax 01948 666381  
info@bcmgrc.com



DESIGN &  
CONSULTING  
ENGINEERS

SMART CROSBY INTERNATIONAL  
3 Grosvenor House,  
Melton Road,  
Oakham,  
Rutland,  
LE15 6AX

t: 01572 768961  
e: enquiries@smartcrosby.com  
w: smartcrosby.com

DRAWN BY

TH

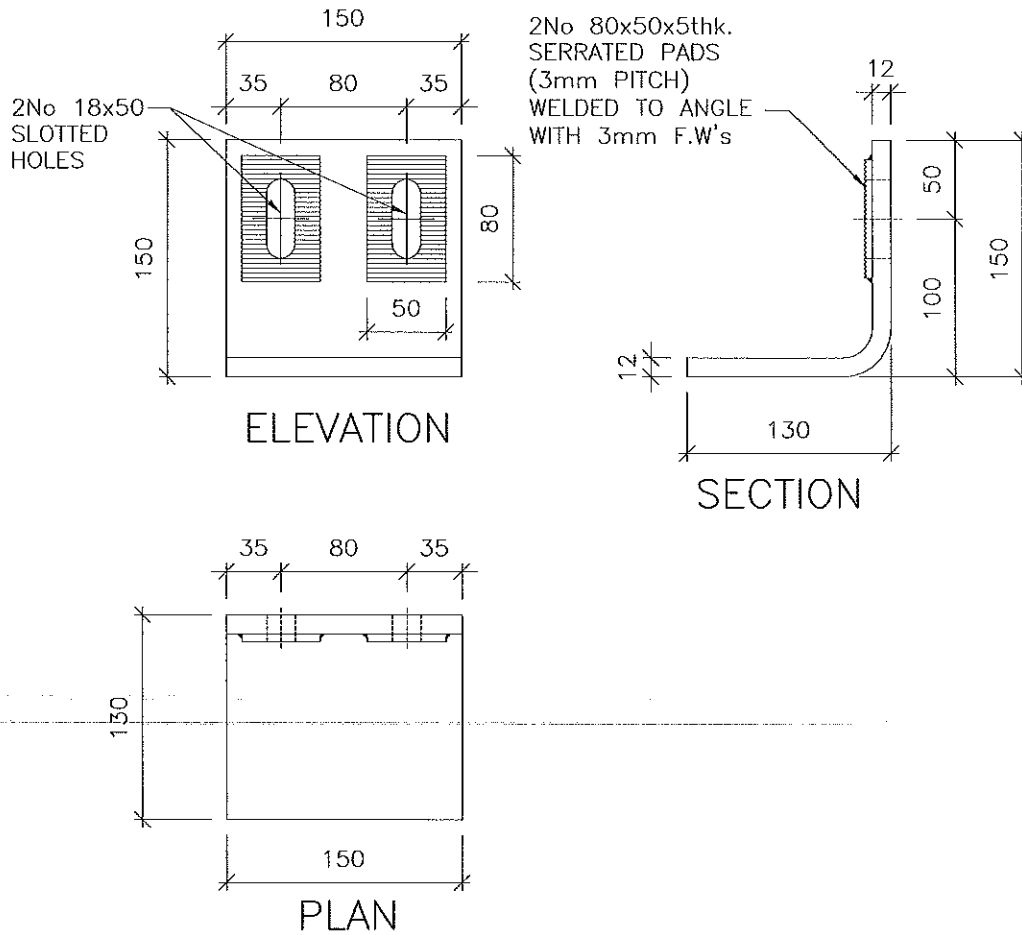
DATE

CHECKED

BB

Drawing No.

REV



COMPONENT XS03

SAMPLE

CLIENT



Unit 22 Civic Industrial Park  
Whitchurch Shropshire  
SY13 1TT

www.bcmgrc.com

Tel: 01948 665321  
Fax: 01948 666361  
info@bcmgrc.com



DESIGN &  
CONSULTING  
ENGINEERS

SMART CROSBY INTERNATIONAL  
3 Grosvenor House,  
Melton Road,  
Oakham,  
Rutland,  
LE15 6AX

t: 01572 756861  
e: enquiries@smartcrosby.com  
w: smartcrosby.com

DRAWN BY

TH

DATE

CHECKED

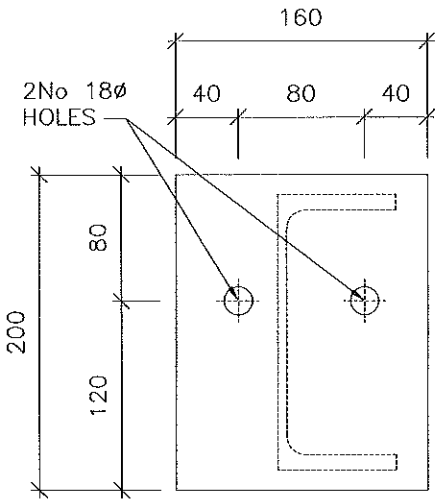
BB

Drawing No.

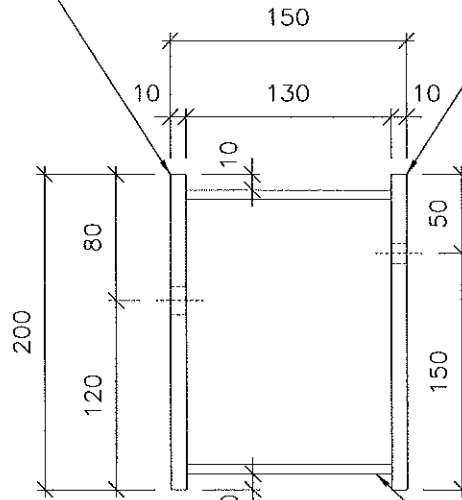
REV

1No 200x160x10thk. GALV.  
M.S PLATE WITH 2No 18 $\phi$   
HOLES WELDED TO PFC  
WITH 5mm CONT. F.Ws  
ALLROUND

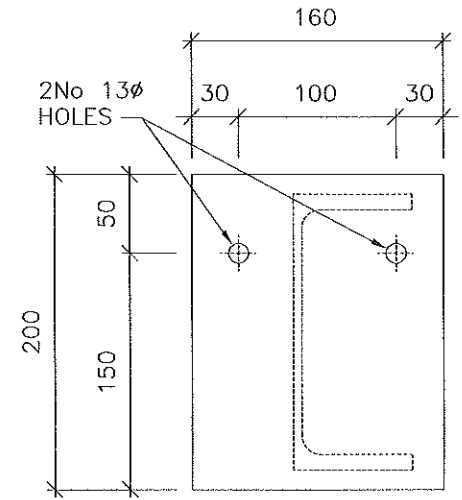
1No 200x160x10thk. GALV.  
M.S PLATE WITH 2No 13 $\phi$   
HOLES WELDED TO PFC  
WITH 5mm CONT. F.Ws  
ALLROUND



END VIEW X

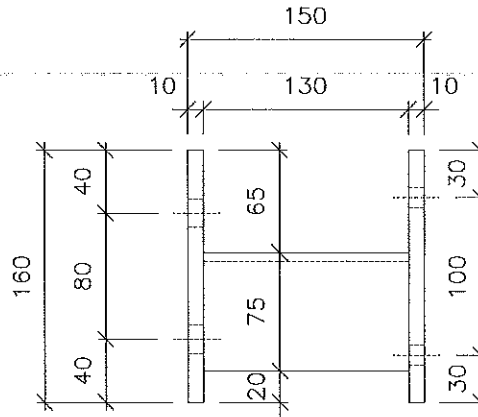


SIDE VIEW



END VIEW Y

180x75x18x  
130LG. PFC



PLAN

COMPONENT XB04

SAMPLE